

# Buffet-Crampon & Cie

Paris, France

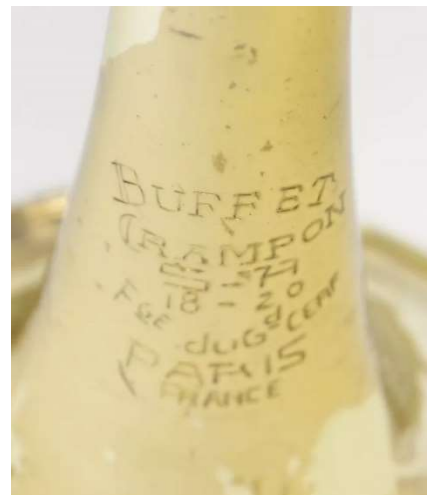
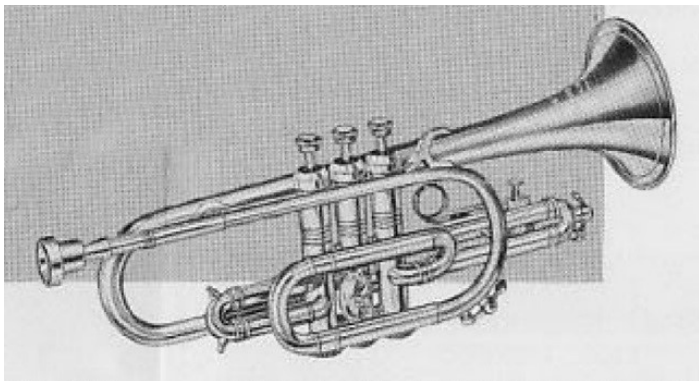
- 1844 Buffet-Crampon is established by Jean Buffet at 20 Passage du Grand Cerf, Paris (*New Langwill Index*).
- 1859 Change to Buffet Crampon & Cie (*NLI*).
- 1865 Paul Goumas is now in charge of Buffet (*NLI*).
- 1885 Goumas retires and the company is headed by Paul Evette and Ernest Schaeffer (*NLI*).
- 1895 Start of brass instrument production (*NLI*).
- 1900 175 workers at Mantes factory & 25 in Paris.
- 1981 Buffet is purchased by Boosey & Hawkes.
- 2006 Buffet buys Courtois & Besson.
- 2012 Buffet-Crampon becomes the Buffet Group.
- 2016 End of trombone production at Courtois factory in Ambroise and all production is now in Markneukirchen.
- 2018 No brass is currently made under the Buffet name.

Buffet instruments are the professional quality while the Evette & Schaeffer models are a step down in pricing. They are often called the “American Model” and made for the US market.

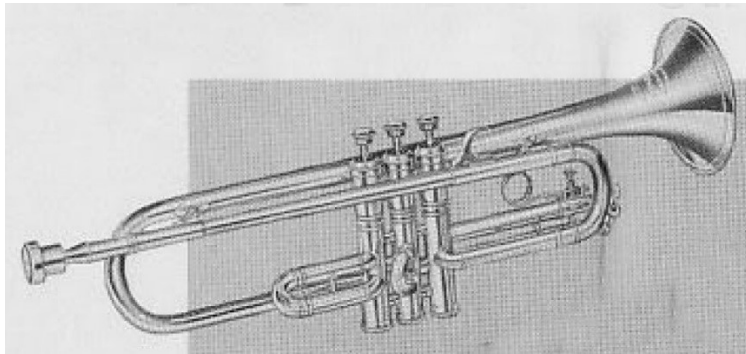
Evette & Schaeffer trumpet in D.



Evette & Schaeffer model E80 Cornet offered by Carl Fischer.



Evette & Schaeffer model E85 trumpet offered by Carl Fischer.



There is uncertainty about the origins of Buffet brass instruments. Buffet has said at one time that they never made brass until they purchased Courtois yet someone who worked for them developing trumpets said that they did make them.

Instruments should be checked for a country of origin marking as all brass coming to the US should have that. Some Buffet brass were likely made by Ernst Modl. Modl (1892-1972) started with F. X. Hüller in 1919 when he married Franz's daughter. In 1950, he moved to Neutsadt in West Germany then in 1954 moved to Diespeck; working under the EMO World label. This company remained in business until his death in 1972. The World model trumpet looks identical to the Buffet balanced model.



Buffet #764



EMO World Deluxe



The earliest brass have the Evette & Schaeffer name as well as the Buffet-Crampon & Cie name and stamp.

Bass Trumpet #261



Horn #2623



Trumpet #4163 in D



After these early instruments, Buffet may have ended brass production and remained with the woodwinds they have become famous for.

In around 1952, Buffet seems to have contracted with Ernst Modl (photo 1), of West Germany, to make trumpets and cornets for them. The trumpets are balanced models with the valves forward and match Modl's World models. Modl built a new factory in Diespeck in 1954 (photo 2).



Trumpet #29 c.1952



Trumpet #268 c.1953



Trumpet #698 c.1954



Trumpet #708 c.1955



#764

Trumpet #764 c.1955

This example has a bell flair that wraps around the rim.



Trumpet #942 c.1955

The top of the pinky hook has gotten a little shorter.



Trumpet #1110 c.1956



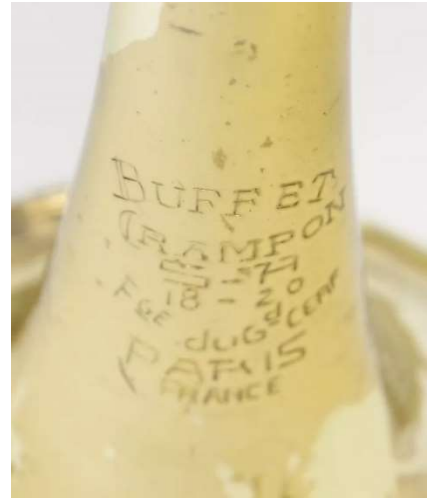
Almost identical to this EMO World #1933



#1110

Trumpet #1605 c.1957

By now they are all using the bell flair that wraps around the rim.



Trumpet #4458 c.1963



#4942

Trumpet #4942 c.1964 w/1956 patent 3<sup>rd</sup> slide trigger



Trumpet #4988 c.1964

#4988



Trumpet #5356 c.1965 w/dual triggers



Cornet #5484 c.1965



At this time, the serial numbers jump to 5 digits, indicating a change in supplier for these instruments. This also brings in the Evette & Schaeffer name which was a lower-priced version.

Evette & Schaeffer American model Trumpet #67830 c.1966



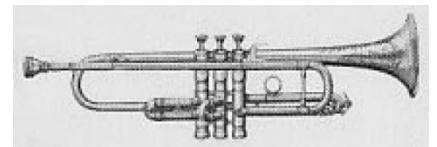
Trumpet #70582 Buffet Crampon Paris model c.1966



At this time, we have another shift to a six-digit serial number.



#70582



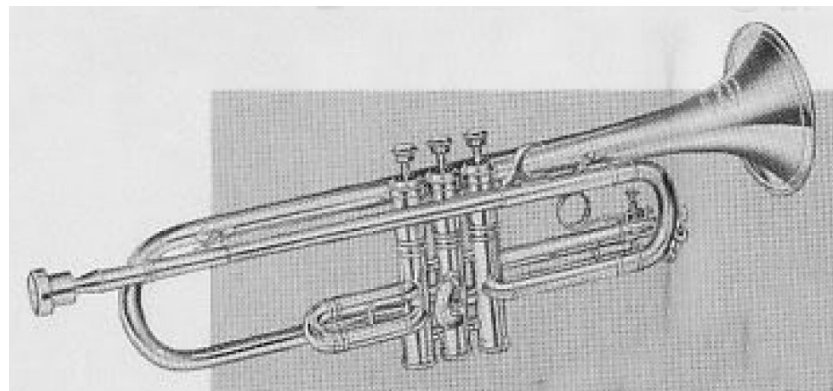
Evette & Schaeffer American model Trombone #158710



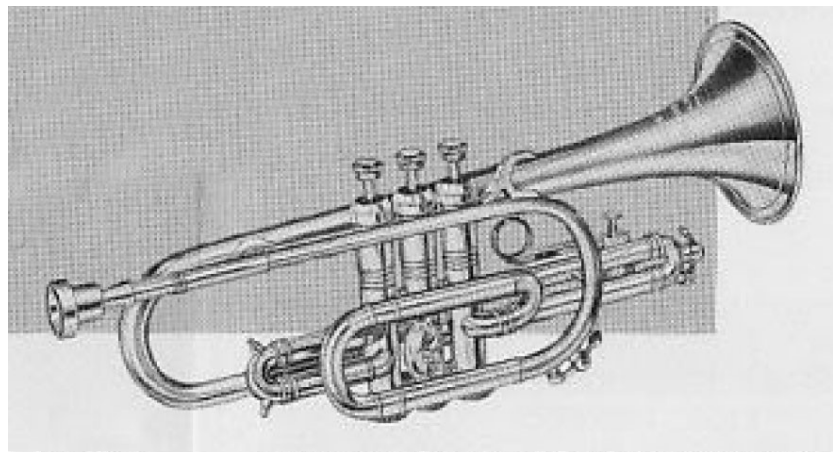
Evette & Schaeffer Trumpet #161430 c.1967



Evette & Schaeffer E85 Trumpet from undated Fischer catalog. This has the same unbraced tuning slide and pinky hook shown in the above example c.1967.



Evette & Schaeffer E80 Cornet from same catalog.





Now we have the final serial number jump into the upper 600k range c.1968. These may have been made by Bohm Meinl.

Evette & Schaeffer American model Cornet #671750 c.1968



Evette & Schaeffer American model Trumpet #681049 c.1969

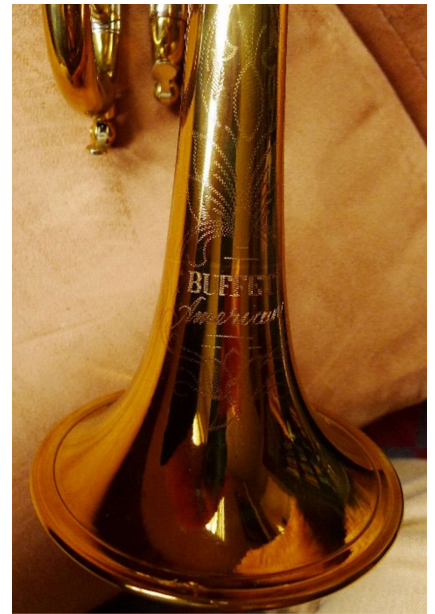


Evette & Schaeffer American model Trumpet #682576 c.1969



#682685

Buffet American model #691987 c.1970



Carl Fischer Musical Instruments was sold in 1970 and this probably put an end to all Buffet production. The American model was probably just made for the US market.



E&S Cornet #663813

Evette & Schaeffer American model #701179 c.1970



Evette & Schaeffer American model #701245 c.1970



The Buffet-Crampon company was located at the Passage du Grand Cerf 18-20. They started in the 1840s at #20 then added #18 by 1875. This is a glass-roofed passage in Paris with a number of shops along each side.



Buffet on the left below



Current factory at 5 rue Maurice Berteaux in Mantes-La-Ville.

